

Concept 305 EDLF

CONCEPT 305 EDLF

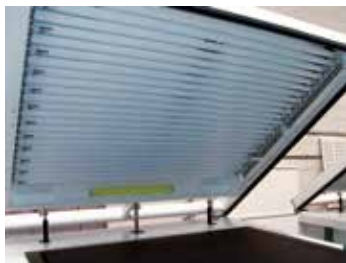


**CONVENIENT.
INTEGRATED.
SOLUTIONS.**

Integrated exposure, dryer and finishing unit

Concept 305 EDLF is the most advanced multiprocess unit for the exposure, drying and finishing of flexographic plates available on the market. The unit can process plates up to 920 x 1200 mm (36 x 48") and is equipped with a new pneumatic and automatic system to open the lid, a PLC control and a touchscreen operator interface.

This product has been fully designed to reflect the market demand focusing in very high quality production of digital flexo plates.



▲ Exposure light is uniformly distributed, so that the entire surface of the plate is exposed in a consistent manner.



▲ Temperature control on exposure surface reduces oxygen emissions, eliminating problems related to blurring.



▲ Drying section includes four drawers with individual timers and automatic fans.



▲ Simultaneous or separate activation of UV-A and UV-C finishing tubes for flexibility based on production type.



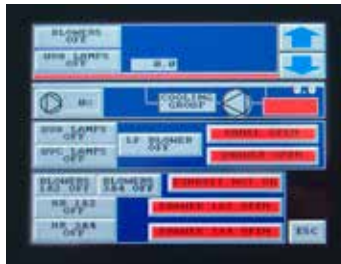
Integrator for controlling light emissions. Automatic adjustment of light emission time when the exposure tubes lose power.

Bulb temperature control during exposure measures for consistent and continuous light emission, guaranteeing better quality during the exposure stage.



Drying drawers with consistent air distribution ensures uniform drying of the plate, rapid expulsion of the solvent and reduced drying time.

Both the dryer and finishing sections include integrated solvent fume extraction systems.



Operator friendly colour touch screen with graphic display of all functions.

Technical Specifications

MODEL	Concept 305 EDLF
PERFORMANCE	
Plate types	Flexographic plates
Plate size (max)	920 x1200 mm (36 x 48")
CONSUMPTION	
Power (operate)	9.5 kW — 15A / 25A
Power (source)	400V 3PH + N / 230V 3 PH -- 50/60Hz
Compressed air	6 bar
Air extraction	100 m ³ /h for Dryer 800 m ³ /h for Light Finisher
GENERAL	
Dimensions (uncrated)	1940 x 1840 x 1060 mm (76.4 x 72.4 x 41.7")
Weight (uncrated)	720 kg (1587 lbs)
Dimensions (crated)	2050 x 2000 x 1550 mm (80.7 x 78.7 x 61.0")
Weight (crated)	990 kg (2183 lbs)

